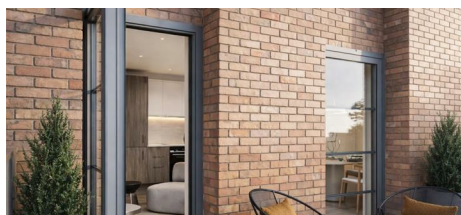
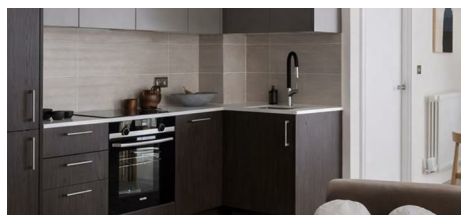
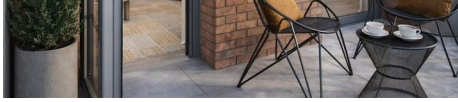


Mulburries





2 The Langdon, Byron Street

, London, E14 0RS

The Langdon is a boutique collection of just 50 contemporary apartments set around a beautifully landscaped central courtyard in the heart of vibrant Poplar. Located just moments from Langdon Park DLR, residents benefit from fast connections to Canary Wharf in under 10 minutes and Stratford in around 11 minutes, making it ideal for professionals. The development offers thoughtfully designed one, two and three bedroom homes with light-filled interiors, private balconies or terraces and high-quality finishes throughout. Surrounded by parks, canals, local markets and a growing cultural scene, The Langdon combines modern living, excellent connectivity and strong long-term appeal in one of East London's most up-and-coming neighbourhoods.

Guide price £540,000

2 The Langdon, Byron Street

, London, E14 0RS



- 2 minute walk to Langdon Park DLR
- Bank in 15 mins
- Canary Wharf in around 6 minutes
- Low service charge
- Stratford in approximately 11 minutes









These particulars, whilst believed to be accurate are set out as a general outline only for guidance and do not constitute any part of an offer or contract. Intending purchasers should not rely on them as statements of representation of fact, but must satisfy themselves by inspection or otherwise as to their accuracy. No person in this firms employment has the authority to make or give any representation or warranty in respect of the property.

31 Lawn Lane, Hemel Hempstead, Hertfordshire, HP3 9HH
Tel: 01442 732362 Email: contact@mulburries.co.uk ryan.green@mulburries.co.uk

